

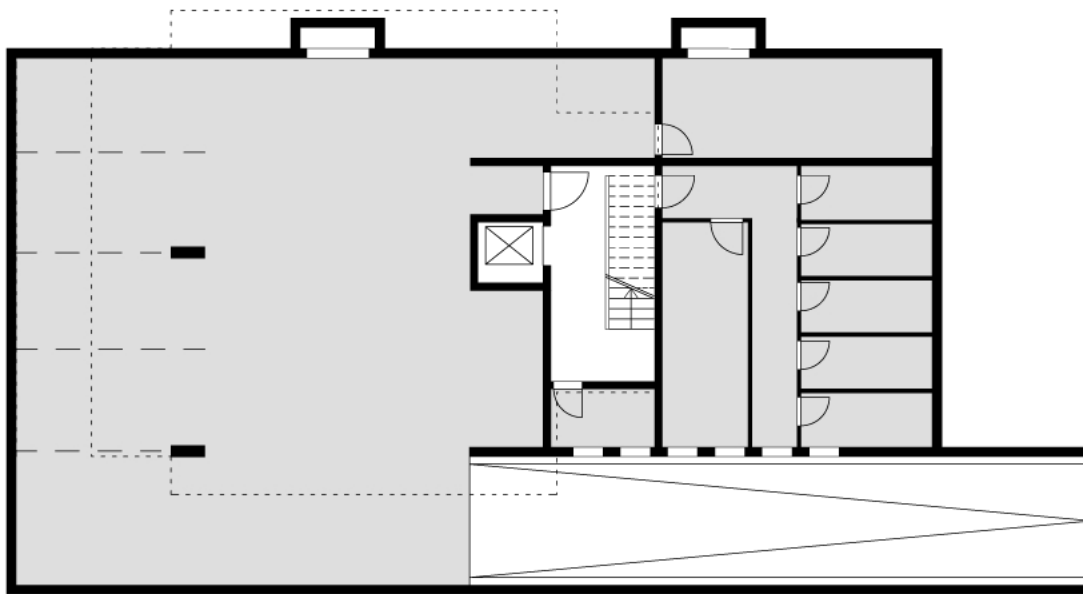
Lageplan

0 20 40 60 m

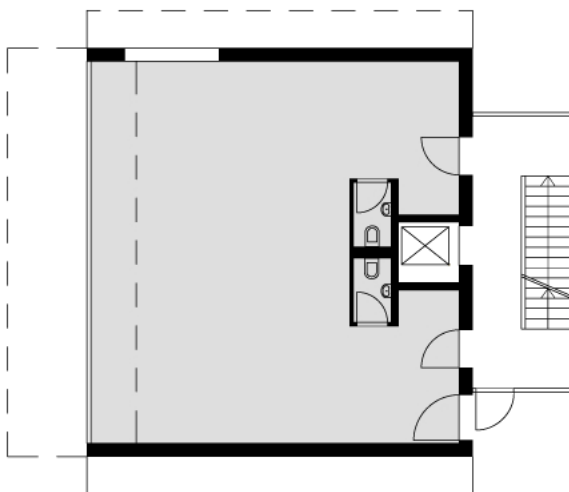


Wohn- und Geschäftshaus Redler
Architekt Helmut Kuëss

2005
Ecke Wälderstrasse/Wolffurterstrasse, Lauterach

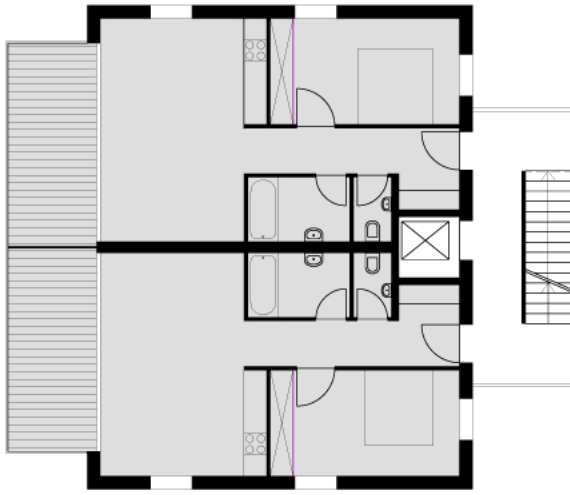


Untergeschoss/Tiefgarage

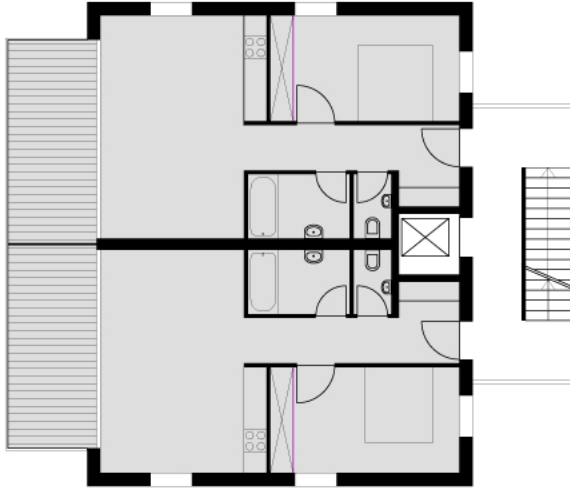


Erdgeschoss/Geschäft

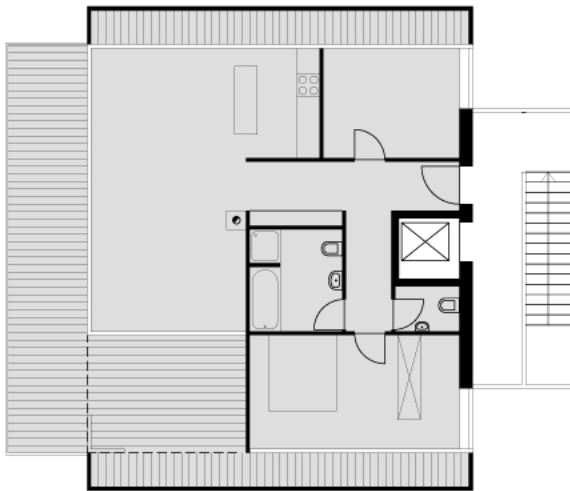
0 2 4 6 m



1. Obergeschoss

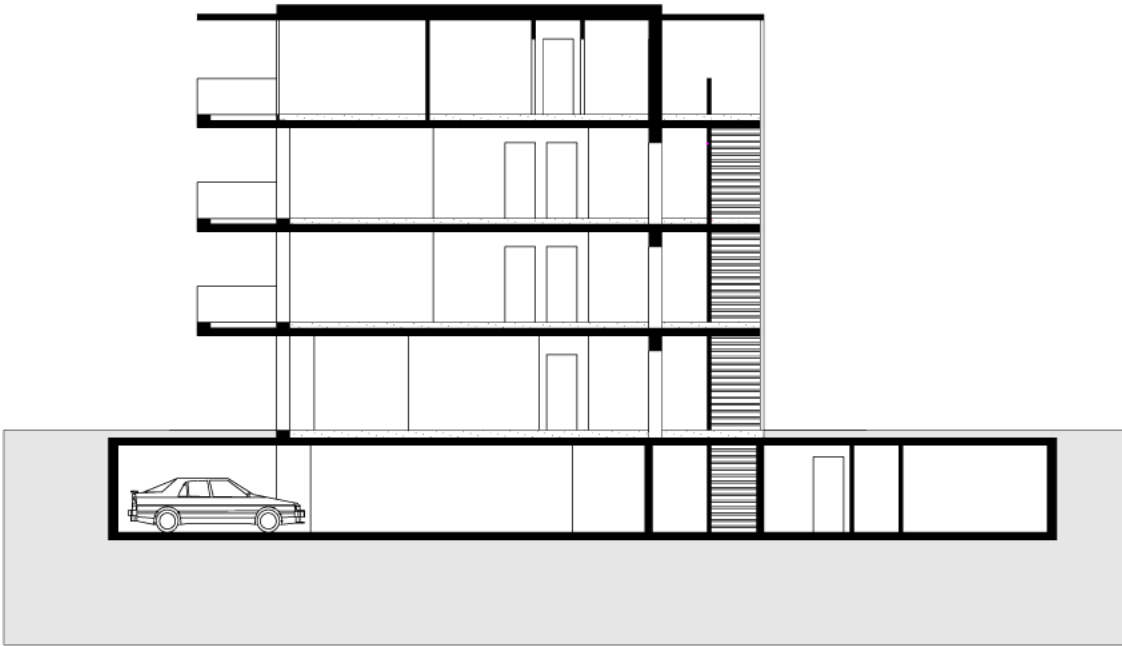


2. Obergeschoss

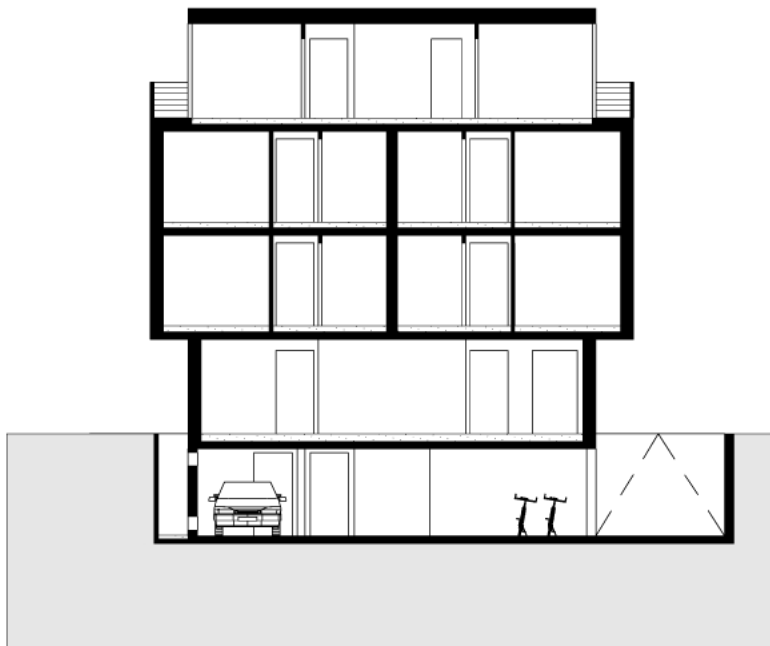


Dachgeschoss

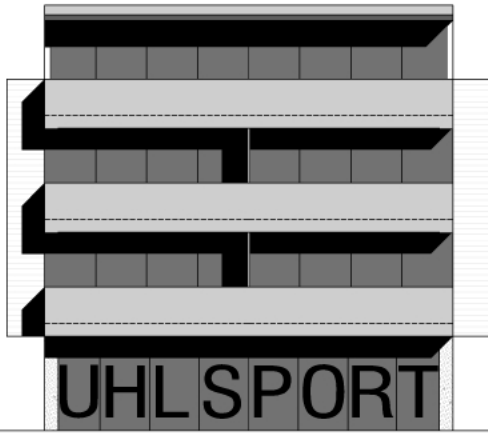




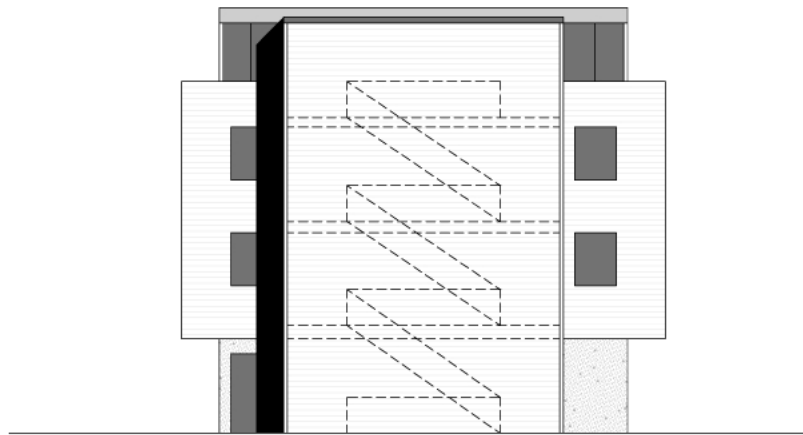
Längsschnitt



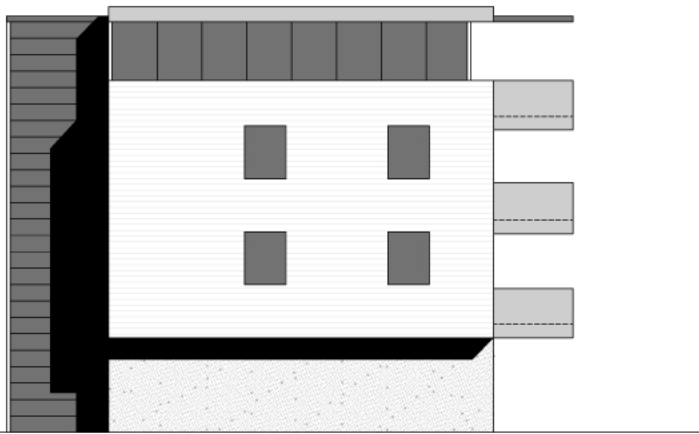
Querschnitt



Ansicht West

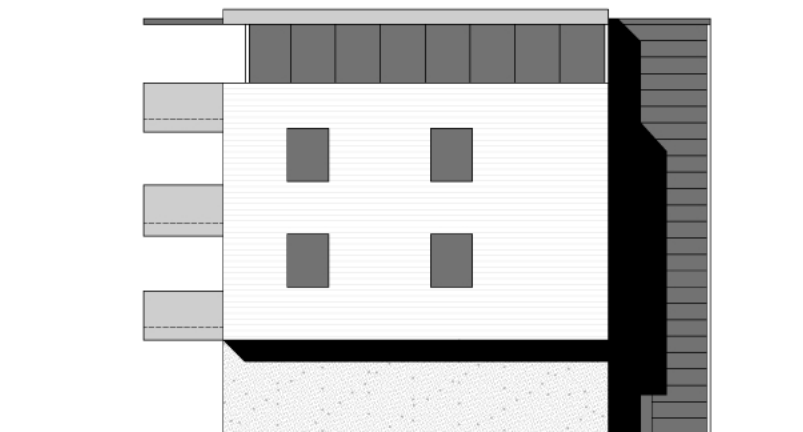


Ansicht Ost



Ansicht Nord

Querschnitt



Ansicht Süd

0 2 4 6 m



2005
Ecke Wälderstrasse/Wolfffurterstrasse, Lauterach

Wohn- und Geschäftshaus Redler
Architekt Helmut Krüss